

BALDOR® • RELIANCE 

Product Information Packet

VWDL3514

1.5HP, 1725RPM, 1PH, 60HZ, 56C, 3532LC, TEFC, F

| Part Detail | | | | | | | |
|-------------|--------|-------------|------------|-------------|--------------------|---------------|------------|
| Revision: | J | Status: | PRD/A | Change #: | | Proprietary: | No |
| Type: | AC | Elec. Spec: | 35WGN568 | CD Diagram: | CD0055 | Mfg Plant: | |
| Mech. Spec: | 35S582 | Layout: | 35LYS582 | Poles: | 04 | Created Date: | 08-30-2012 |
| Base: | N | Eff. Date: | 03-10-2020 | Leads: | 4#16 A&J,2#18 B PH | | |

| Specs | | | |
|---------------------------------|-------------------------|--------------------------------|--------------------|
| Catalog Number: | VWDL3514 | Insulation Class: | F |
| Enclosure: | TEFC | Inverter Code: | Not Inverter |
| Frame: | 56C | KVA Code: | J |
| Frame Material: | Steel | Lifting Lugs: | No Lifting Lugs |
| Output @ Frequency: | 1.500 HP @ 60 HZ | Locked Bearing Indicator: | Locked Bearing |
| Synchronous Speed @ Frequency: | 1800 RPM @ 60 HZ | Motor Lead Quantity/Wire Size: | 4 @ 16 AWG, A&J |
| Voltage @ Frequency: | 230.0 V @ 60 HZ | Motor Lead Exit: | Ko Box |
| | 115.0 V @ 60 HZ | Motor Lead Termination: | Flying Leads |
| XP Class and Group: | None | Motor Type: | 3532LC |
| XP Division: | Not Applicable | Mounting Arrangement: | F1 |
| Agency Approvals: | CSA | Power Factor: | 96 |
| | UR | Product Family: | Wash Down |
| Auxillary Box: | No Auxillary Box | Pulley End Bearing Type: | Sealed Bearing |
| Auxillary Box Lead Termination: | None | Pulley Face Code: | C-Face |
| Base Indicator: | No Mounting | Pulley Shaft Indicator: | Standard |
| Bearing Grease Type: | Polyrex EM (-20F +300F) | Rodent Screen: | None |
| Blower: | None | Shaft Extension Location: | Pulley End |
| Current @ Voltage: | 12.400 A @ 115.0 V | Shaft Ground Indicator: | No Shaft Grounding |

| | | | |
|---------------------------------------|---------------------------|------------------------------------|---------------------|
| | 6.200 A @ 230.0 V | Shaft Rotation: | Reversible |
| | 6.800 A @ 208.0 V | Shaft Slinger Indicator: | Shaft Slinger |
| Design Code: | L | Speed Code: | Single Speed |
| Drip Cover: | No Drip Cover | Motor Standards: | NEMA |
| Duty Rating: | CONT | Starting Method: | Direct on line |
| Electrically Isolated Bearing: | Not Electrically Isolated | Thermal Device - Bearing: | None |
| Feedback Device: | NO FEEDBACK | Thermal Device - Winding: | None |
| Front Face Code: | Standard | Vibration Sensor Indicator: | No Vibration Sensor |
| Front Shaft Indicator: | None | Winding Thermal 1: | None |
| Heater Indicator: | No Heater | Winding Thermal 2: | None |

| Nameplate NP1496L | | | | | | | | | | |
|-------------------|--------------|--|------|----|-----|------|--|----------------|-----|---|
| CAT.NO. | VWDL3514 | | | | | | | | | |
| SPEC. | 35S582N568G1 | | | | | | | | | |
| HP | 1.5 | | | | | | | | | |
| VOLTS | 115/230 | | | | | | | | | |
| AMP | 12.4/6.2 | | | | | | | | | |
| RPM | 1725 | | | | | | | | | |
| FRAME | 56C | | | | HZ | 60 | | | PH | 1 |
| SER.F. | 1.15 | | CODE | J | DES | L | | CLASS | F | |
| NEMA-NOM-EFF | 80 | | PF | 96 | | | | | | |
| RATING | 40C AMB-CONT | | | | | | | | | |
| CC | | | | | | | | USABLE AT 208V | 6.8 | |
| DE | 6205 | | | | ODE | 6203 | | | | |
| ENCL | TEFC | | SN | | | | | | | |

| Parts List | | |
|--------------|--|----------|
| Part Number | Description | Quantity |
| SA250542 | SA 35S582N568G1 | 1.000 EA |
| RA237396 | RA 35S582N568G1 | 1.000 EA |
| OC3060C09SP | CAPACITOR 60 MFD 240 VAC | 1.000 EA |
| EC1540A04 | ELEC CAP, 540-648 MFD, 125V, 1.81D X 4. | 1.000 EA |
| WD3006A01 | RSS-2-103JT 2W 10K RES. METAL OXIDE 5% | 1.000 EA |
| NS2512A01 | INSULATOR, CONDUIT BOX X | 1.000 EA |
| 35CB3008A01G | SPL CONDUIT BOX, MACHINED GRAY | 1.000 EA |
| 35GS1039 | 05 MOLDED GASKET W/LIP, 1.12 LEAD HOLE, | 1.000 EA |
| 51XB1016A08 | 10-16X 1/2HXWSSLD SERTYB | 2.000 EA |
| 11XW1032G06 | 10-32 X .38, TAPTITE II, HEX WSHR SLTD U | 1.000 EA |
| 35EP3122B00W | MASTER ODE,203 BRG,.683SH,.125NPT DRNS,F | 1.000 EA |
| HW4072A01 | BLACK DRAIN PLUG FOR .125 NPT | 3.000 EA |
| 51XW0832A07 | 8-32 X .44, TAPTITE II, HEX WSHR SLTD SE | 2.000 EA |
| 35CB3801W | CAPACITOR COVER, CAST W/WHITE EPOXY | 1.000 EA |
| 35GS3006 | 1/16"WHT CAPAC.BOX GASK. | 1.000 EA |
| NS2501A02 | INSULATOR, CAPACITOR BOX | 1.000 EA |
| HA7010 | CAPACITOR RETENTION CLAMP | 1.000 EA |
| 51XB1016A08 | 10-16X 1/2HXWSSLD SERTYB | 4.000 EA |
| HW5100A03 | WAVY WASHER (W1543-017) | 1.000 EA |
| 35EP3307E00W | MASTER DE,205 BRG,1.623SH,.125NPT DRNS,C | 1.000 EA |
| HW4072A01 | BLACK DRAIN PLUG FOR .125 NPT | 3.000 EA |
| HW4600B49 | SEAL 0.938 X 1.624 X 0.250 SINGLE LIP DB | 1.000 EA |
| 12XN1032S20 | 10-32 X 1-1/4 HEX M.S. , STAINLESS STEEL | 2.000 EA |
| 51XB1214A16 | 12-14X1.00 HXWSSLD SERTYB | 1.000 EA |

| Parts List (continued) | | |
|------------------------|--|----------|
| Part Number | Description | Quantity |
| 35FH4005A32SP | IEC FH NO GRSR W/3 HOLES - PRIMED | 1.000 EA |
| 11XW1032S06 | 10-32 X .38, TAPTITE II, HEX WSHR SLTD U | 3.000 EA |
| 35CB4522 | 35 LIPPED CB LID PRIMED | 1.000 EA |
| 35GS1030A02 | 35 GS FOR CB LID - WHITE NEOPRENE | 1.000 EA |
| 59XW0832S07 | TAPTITE II,HEX WSHR UNSLTD SER,410 S.S., | 4.000 EA |
| HW1003S08 | WASHER, #8 EX TH LK, SS | 4.000 EA |
| HW4600B39SP | V-RING SLINGER 0.550 X 0.790 X .18 VITON | 1.000 EA |
| HW4600B32SP | V-RING SLINGER 1.000 X 1.540 X .24 VITON | 1.000 EA |
| HW2502D13 | SS KEY, 3/16 SQ X 1.375 | 1.000 EA |
| HA7000A04 | KEY RETAINER 0.625 DIA SHAFTS | 1.000 EA |
| MJ5001A27 | 32220KN GRAY SEALER *MIN BUY 4 QTS=1GAL | 0.001 QT |
| 85XU0407S04 | 4X1/4 U DRIVE PIN STAINLESS | 2.000 EA |
| LB1164 | LABEL,WARNING AND DRAIN | 1.000 EA |
| HA5027A02 | HA4054 T-DRAIN X2 BAGGED WITH LABEL | 1.000 EA |
| WD1000A15 | 3-520132-2 AMP FLAG (4M/RL NON-CANC/NON- | 4.000 EA |
| MJ1000A02 | GREASE, MOBIL POLYREX EM - 124047 | 0.050 LB |
| 35FN3002A05SP | EXFN, PLASTIC, 6.376 OD, .638 ID | 1.000 EA |
| MG1025Z02 | ACTIVATOR WILKOFAS 060.02HF | 0.010 GA |
| MG1025W01 | WILKOFAS 781.01, SIGNAL WHITE #9003 | 0.017 GA |
| HA3100S09 | THRUBOLT 9.25 LENGTH SS | 4.000 EA |
| SP5181A01 | MODEL 35 LC TORQ STAT SWITCH LEAD ASSY | 1.000 EA |
| LC0001 | CONN LABEL TYPE L, 6 LEAD, DUAL VOLTS, R | 1.000 EA |
| NP1496L | SS WD UL CSA CC | 1.000 EA |
| 36PA1000 | PKG GRP, PRINT PK1016A06 | 1.000 EA |

Product Information Packet: VWDL3514 - 1.5HP,1725RPM,1PH,60HZ,56C,3532LC,TEFC,F

| | | |
|------------|---|----------|
| PK3082 | STYROFOAM CRADLE | 1.000 EA |
| MN416A01 | TAG-INSTAL-MAINT no wire (1200/bx) 3/19 | 1.000 EA |
| FE-0000001 | ZRTG FE ASSEMBLY | 1.000 EA |
| PE-0000002 | ZRTG PE ASSEMBLY | 1.000 EA |

AC Induction Motor Performance Data

Record # 39616 - Typical performance - not guaranteed values

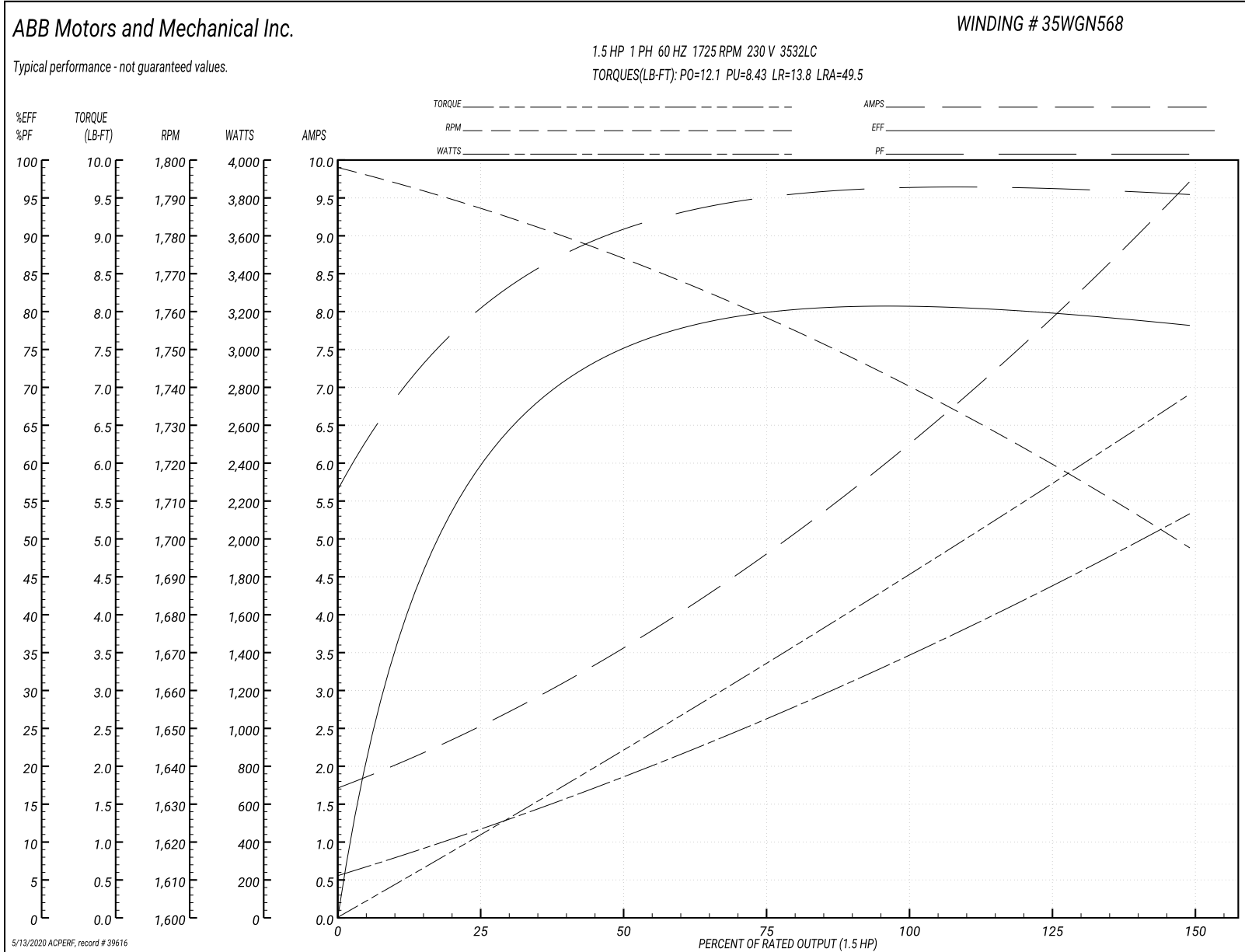
| | | |
|-------------------------------|---------------------|------------------------|
| Winding: 35WGN568-R002 | Type: 3532LC | Enclosure: TEFC |
|-------------------------------|---------------------|------------------------|

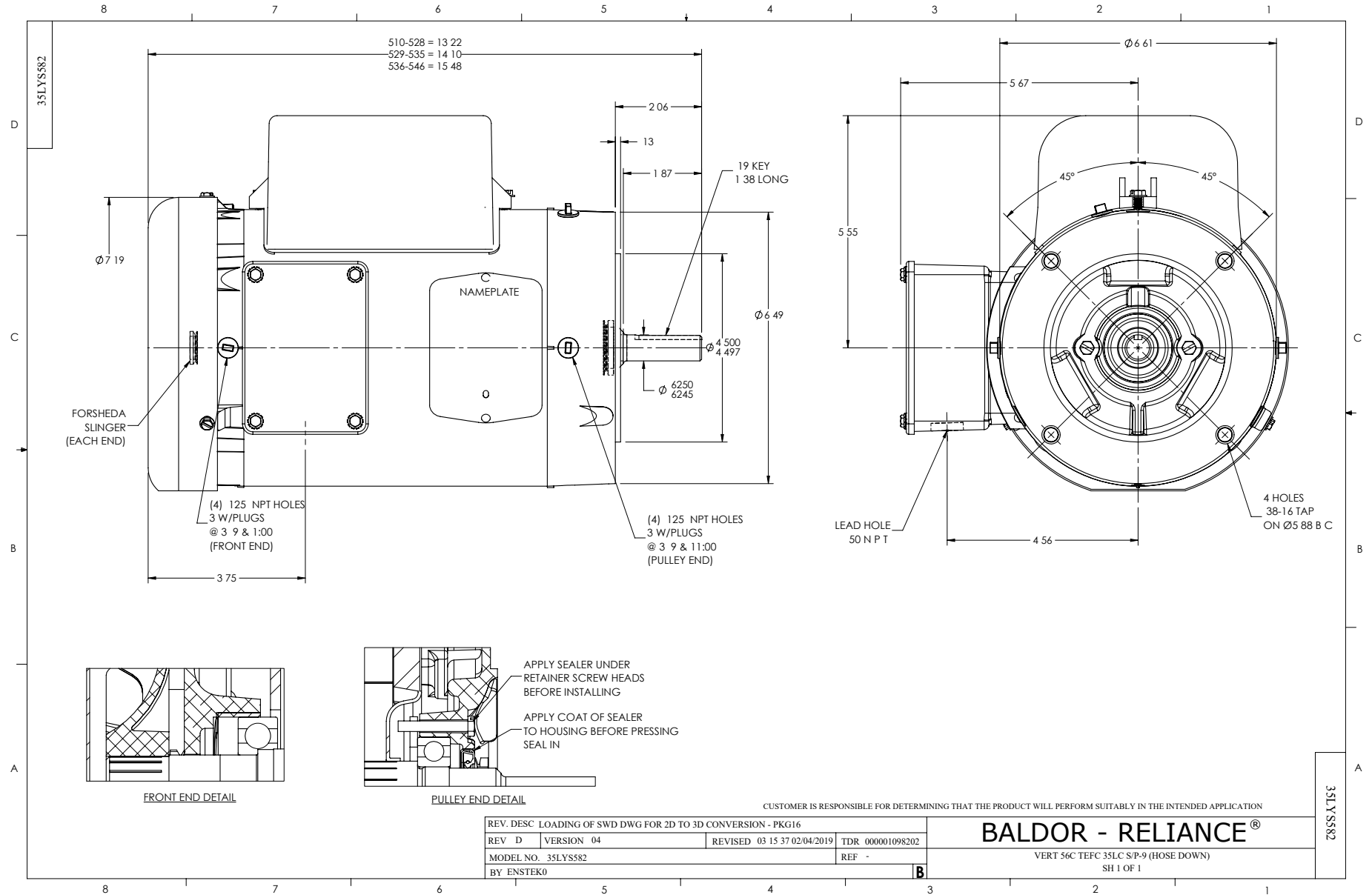
| Nameplate Data | | | | 230 V, 60 Hz: High Voltage Connection | |
|-----------------------|--------------|--------------|----|--|------------------------------|
| Rated Output (HP) | 1.5 | | | Full Load Torque | 4.48 LB-FT |
| Volts | 115/230 | | | Start Configuration | direct on line |
| Full Load Amps | 12.4/6.2 | | | Breakdown Torque | 12.1 LB-FT |
| R.P.M. | 1725 | | | Pull-up Torque | 8.43 LB-FT |
| Hz | 60 | Phase | 1 | Locked-rotor Torque | 13.8 LB-FT |
| NEMA Design Code | L | KVA Code | J | Starting Current | 49.5 A |
| Service Factor (S.F.) | 1.15 | | | No-load Current | 1.76 A |
| NEMA Nom. Eff. | 80 | Power Factor | 96 | Line-line Res. @ 25°C | 1.69 Ω A Ph 1.5344 Ω B Ph |
| Rating - Duty | 40C AMB-CONT | | | Temp. Rise @ Rated Load | 69°C |
| S.F. Amps | | | | Temp. Rise @ S.F. Load | 82°C |

Load Characteristics 230 V, 60 Hz, 1.5 HP

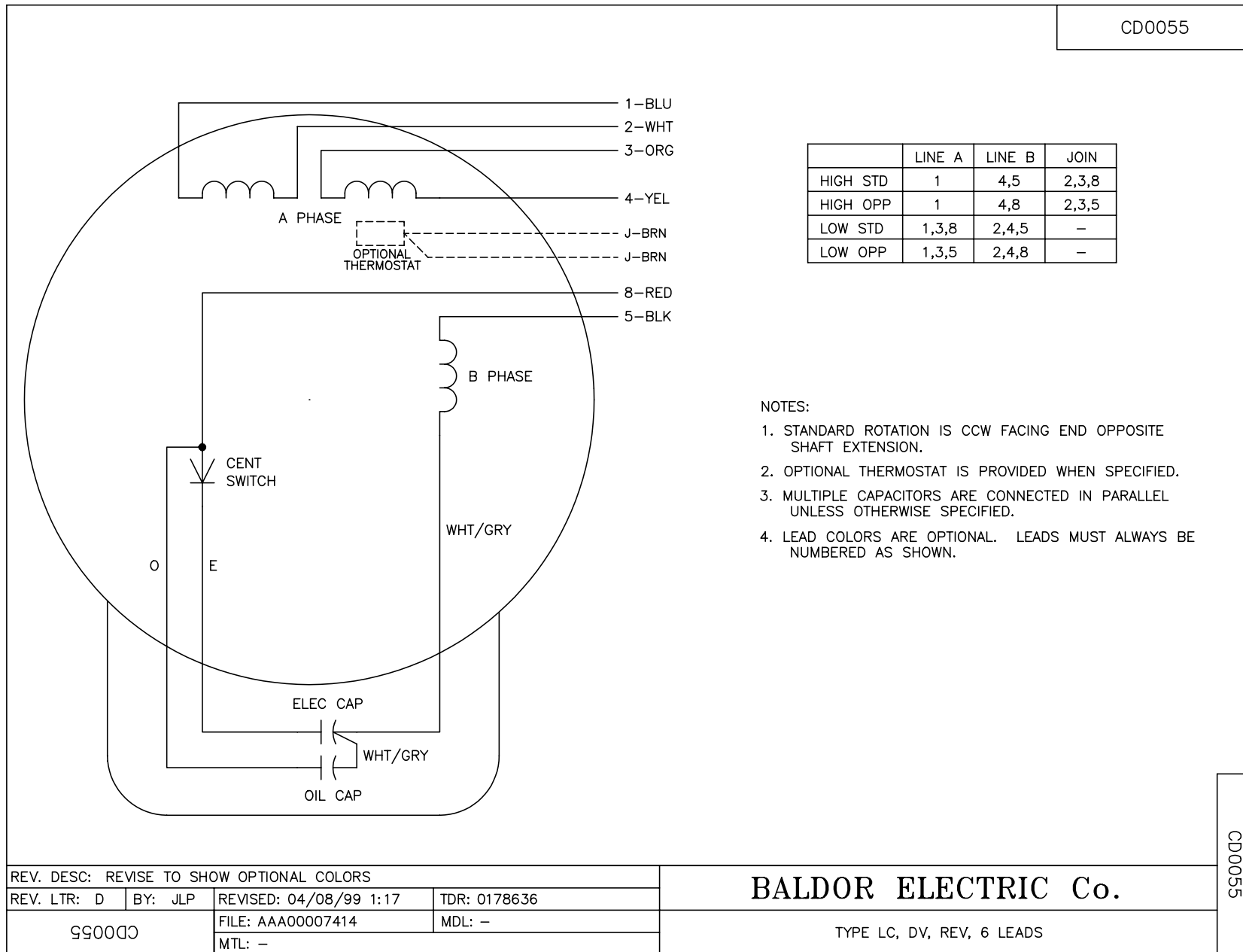
| % of Rated Load | 25 | 50 | 75 | 100 | 125 | 150 | S.F. |
|-----------------|--------|--------|--------|--------|--------|--------|------|
| Power Factor | 83 | 91 | 95 | 96 | 96 | 96 | 96 |
| Efficiency | 58.3 | 74.3 | 79.3 | 81.2 | 80.3 | 77.8 | 80.7 |
| Speed | 1786.8 | 1773.6 | 1758.8 | 1742.3 | 1721.1 | 1696.6 | 1730 |
| Line amperes | 2.41 | 3.53 | 4.78 | 6.21 | 7.86 | 9.72 | 7.2 |

Performance Graph at 230V, 60Hz, 1.5HP Typical performance - Not guaranteed values





CD0055



| | LINE A | LINE B | JOIN |
|----------|--------|--------|-------|
| HIGH STD | 1 | 4,5 | 2,3,8 |
| HIGH OPP | 1 | 4,8 | 2,3,5 |
| LOW STD | 1,3,8 | 2,4,5 | - |
| LOW OPP | 1,3,5 | 2,4,8 | - |

NOTES:

1. STANDARD ROTATION IS CCW FACING END OPPOSITE SHAFT EXTENSION.
2. OPTIONAL THERMOSTAT IS PROVIDED WHEN SPECIFIED.
3. MULTIPLE CAPACITORS ARE CONNECTED IN PARALLEL UNLESS OTHERWISE SPECIFIED.
4. LEAD COLORS ARE OPTIONAL. LEADS MUST ALWAYS BE NUMBERED AS SHOWN.

| | | | |
|---|---------|------------------------|--------------|
| REV. DESC: REVISE TO SHOW OPTIONAL COLORS | | | |
| REV. LTR: D | BY: JLP | REVISED: 04/08/99 1:17 | TDR: 0178636 |
| 99000 | | FILE: AAA00007414 | MDL: - |
| | | MTL: - | |

BALDOR ELECTRIC Co.

TYPE LC, DV, REV, 6 LEADS

CD0055